

See CIPAC H, p.261

TEBUCONAZOLE Emulsifiable Concentrate
***494/EC/M/-**

1 Sampling. Take at least 500 mL.

2 Identity tests

2.1 GLC. As for tebuconazole WP, **494/WP/M/2.1** CIPAC H, *p* 262)

2.2 Infrared. As for tebuconazole WP, **494/WP/M/2.2** CIPAC H, *p* 262)

3 Tebuconazole. As for tebuconazole WP, **494/WP/M/3** CIPAC H, *p* 264)

Repeatability r = 4g/kg at 257 g/kg active ingredient content

TEBUCONAZOLE 494

Fig. 1 Chromatogram (Reference with internal standard dicyclohexyl phthalate)

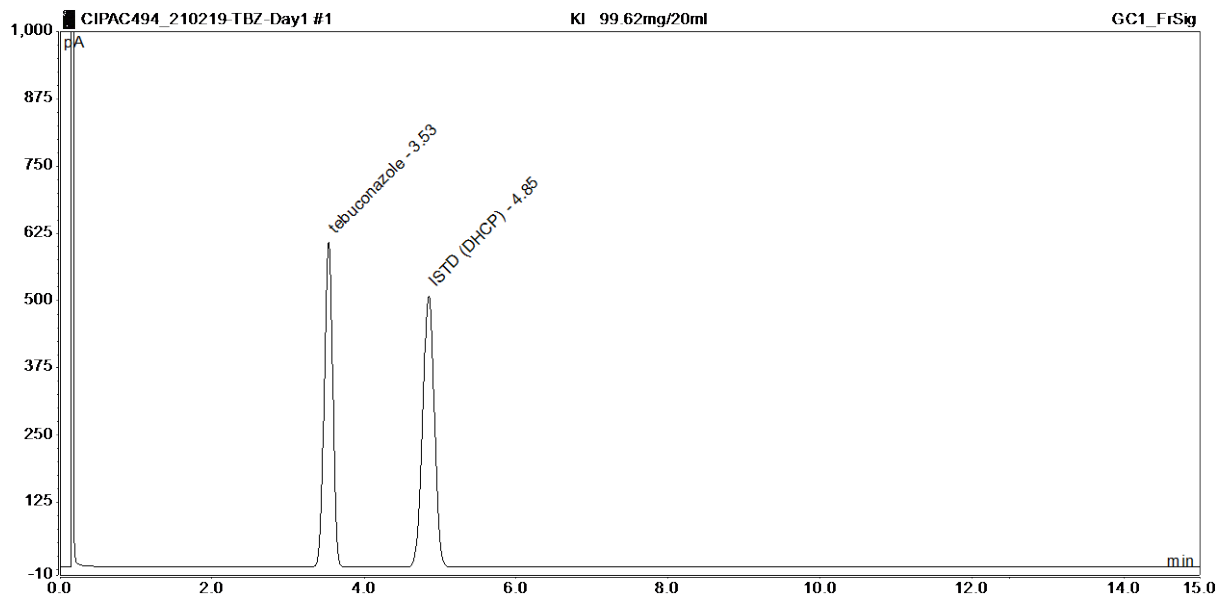


Fig. 2 Typical Chromatogram tebuconazole EC 250

